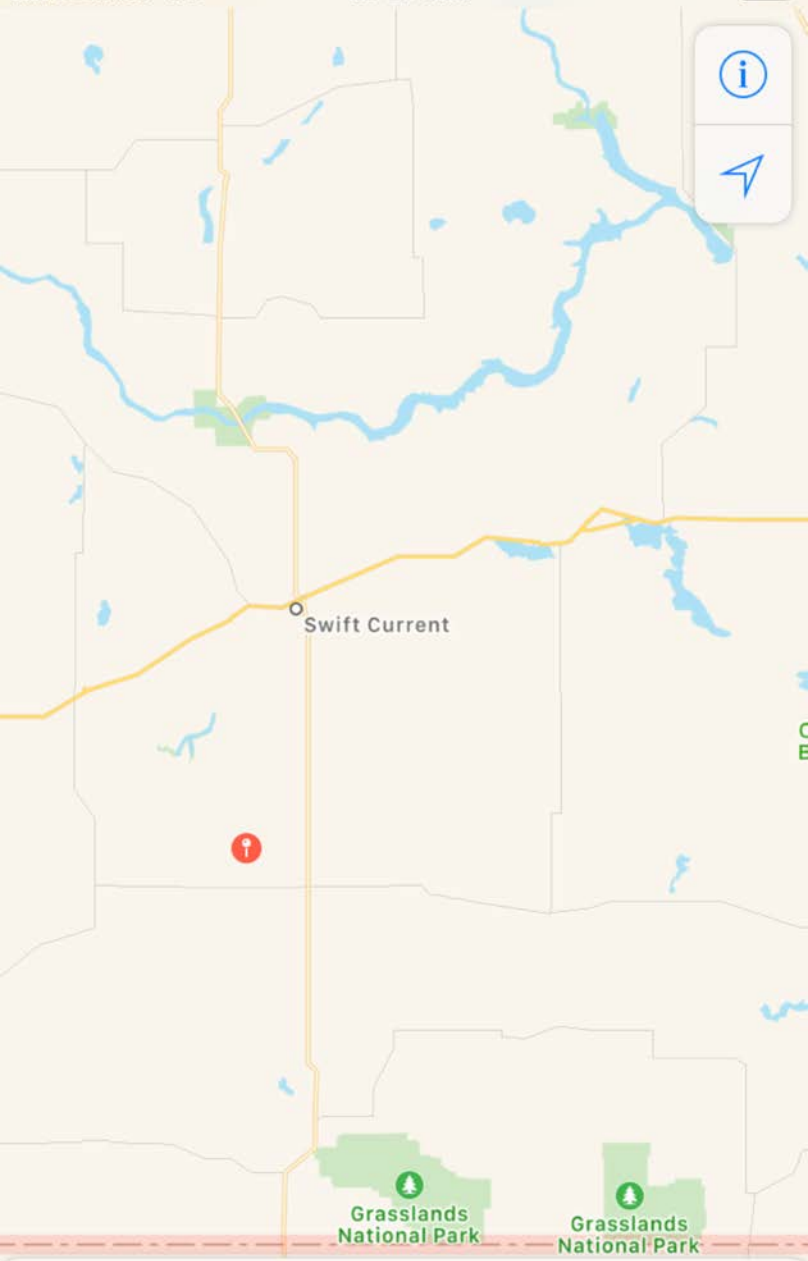


Q joker plan quote



DO I REALLY LOOK LIKE A GUY WITH A PLAN?
YOU KNOW WHAT I AM? I'M A DOG CHASING CARS.
I WOULDN'T KNOW WHAT TO DO WITH ONE IF I CAUGHT IT.
YOU KNOW, I... I JUST DO THINGS.
THE MOB HAS PLANS, THE COPS HAVE PLANS, GORDON'S GOT PLANS.
THEY'RE SCHEMERS
SCHEMERS TRYING TO CONTROL THEIR LITTLE WORLDS.
I'M NOT A SCHEMER.





Swift Current



Grasslands National Park

Grasslands National Park

Search for a place or address

Done

3 of 30



























Done

4 of 6

All

Mentions

**Michelle Hubbard** @Michell580... · 6m Replying to @tpotwilson and
@SE_ResearchFarmAll the samples test positive for
strobilurin resistance**Michelle Hubbard** @Michell580... · 7m Replying to @tpotwilson and
@SE_ResearchFarmFor the monocrop, the 3 places that were
rated got: 5/9, 1/9 and 6/9For the intercrop with fungicide, the 3
places rated: 2/9, 2/9 and 8/9For the intercrop without fungicide: 2/9,
1/9 and 2/9**Michelle Hubbard** @Michell580... · 9m Replying to @tpotwilson and
@SE_ResearchFarm

Crazy isn't it....



Done

16 of 30



average for Monocrops is 2.1, but I'm missing good disease severity data from severity effected fields in the south

**Tyler Wilson**

@tpotwilson



So my 0 fungicide intercrop is better than my intercrop and monocrop sprayed with fungicide

[#lettheconspirioustheorysbegin](#) 



Tweet your reply



2019 Flax / CP

No Fungicides - No Fert - Durum stable

IC₁ - 34.6 bu - 1.4 ac - 24 bu/ac + 3.4 bu/ac

MC₁ - 28.8 bu - 1.4 ac - 20.6 bu/ac

IC₂ - 35.5 bu - 1.4 ac - 25.4 bu/ac + 5.8 bu/ac

MC₂ - 27.5 bu - 1.4 ac - 19.6 bu/ac

51% Flax / 49% CP

CP @ 100 lbs/ac Flax @ 20 lbs/ac

Granular Inoculant CP 2" deep Flax 1" deep

TC
12 bu/ac Flax · 12.25 ⇒ \$169/ac \$11/bu for
12 bu/ac CP · 15.60 ⇒ \$187/ac Cleaning

\$356/ac -
- \$23/ac cleaning
\$332/ac

MC - 20.6 × 15.6 ⇒ \$321/ac

\$11/ac ~~seed~~
- \$7/ac Flax seed
\$4/ac net +

Done

18 of 30



CP/Flax 2019

With Fungicide MC with Fert

Corn Stable, 100 lbs 6-28-28-0w CP
side banded
Granular Inoc

CP @ 120 lbs Flax @ 20 lbs

IC₁ - 52 bu @ 2 ac ⇒ 26 bu/ac + 4 bu/ac

MC₁ - 44 bu @ 2 ac ⇒ 22 bu/ac

IC₂ - 59 bu @ 2 ac ⇒ 29.5 bu/ac + 7.5 bu/ac

MC₂ - 44 bu @ 2 ac ⇒ 22 bu/ac

52% CP 48% Flax

avg 14 bu/ac Flax - 13.25 ⇒ \$185

14 bu/ac CP - 19.60 ⇒ \$218

\$403

- \$28 cleaning

\$375

MC - 22 bu/ac @ 16¢ ⇒

\$343

+ 22/ac net +

- \$28/ac in Fert

+ \$60/ac net +



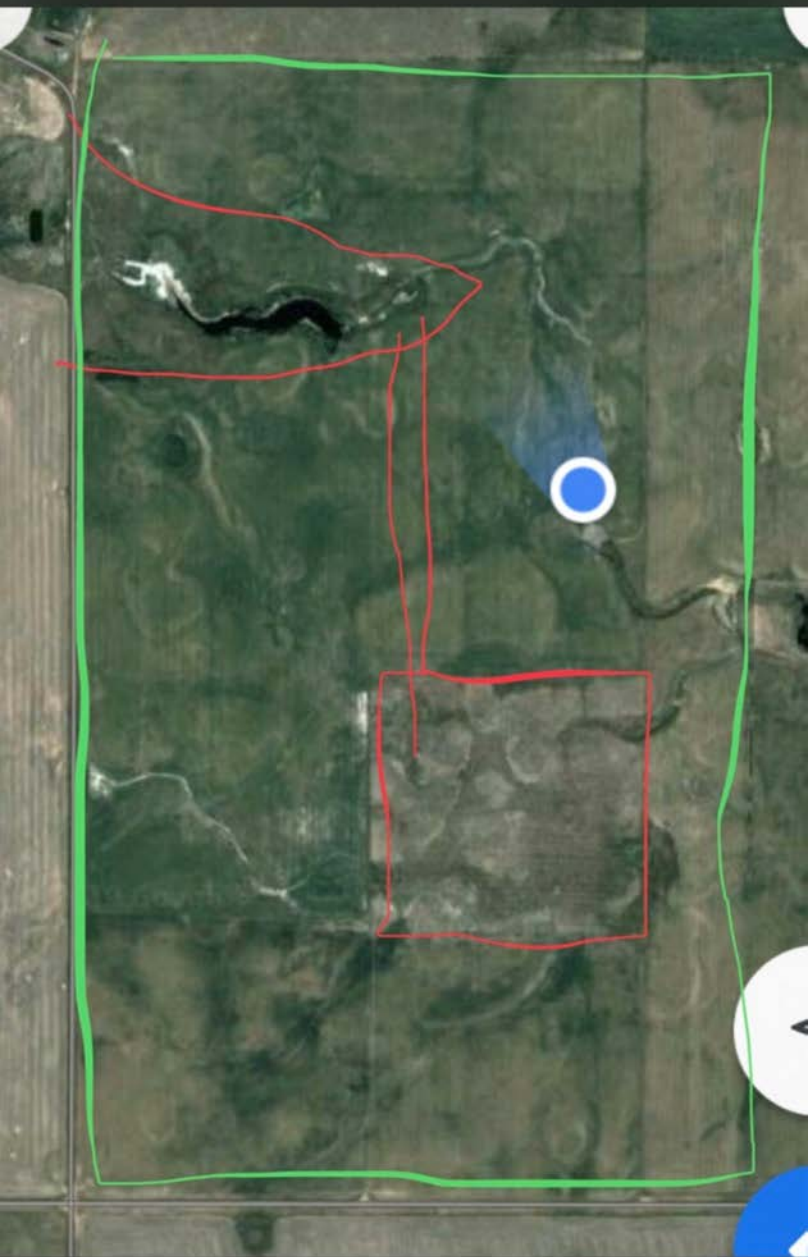
Done

19 of 30









Cancel



Done















