

Grant Ranch

Val Marie SK

GrantRanch.ca





Spiking native grass 4" twisted spikes

June 20, 1992 after a 1" rain





August 1992



8 27 '92



September 1993

Clippings indicate double the production in the clipped area

4 9 '93

September, 4, 1993





OS Grant

Rolling bales down hill to feed in spring



April feeding





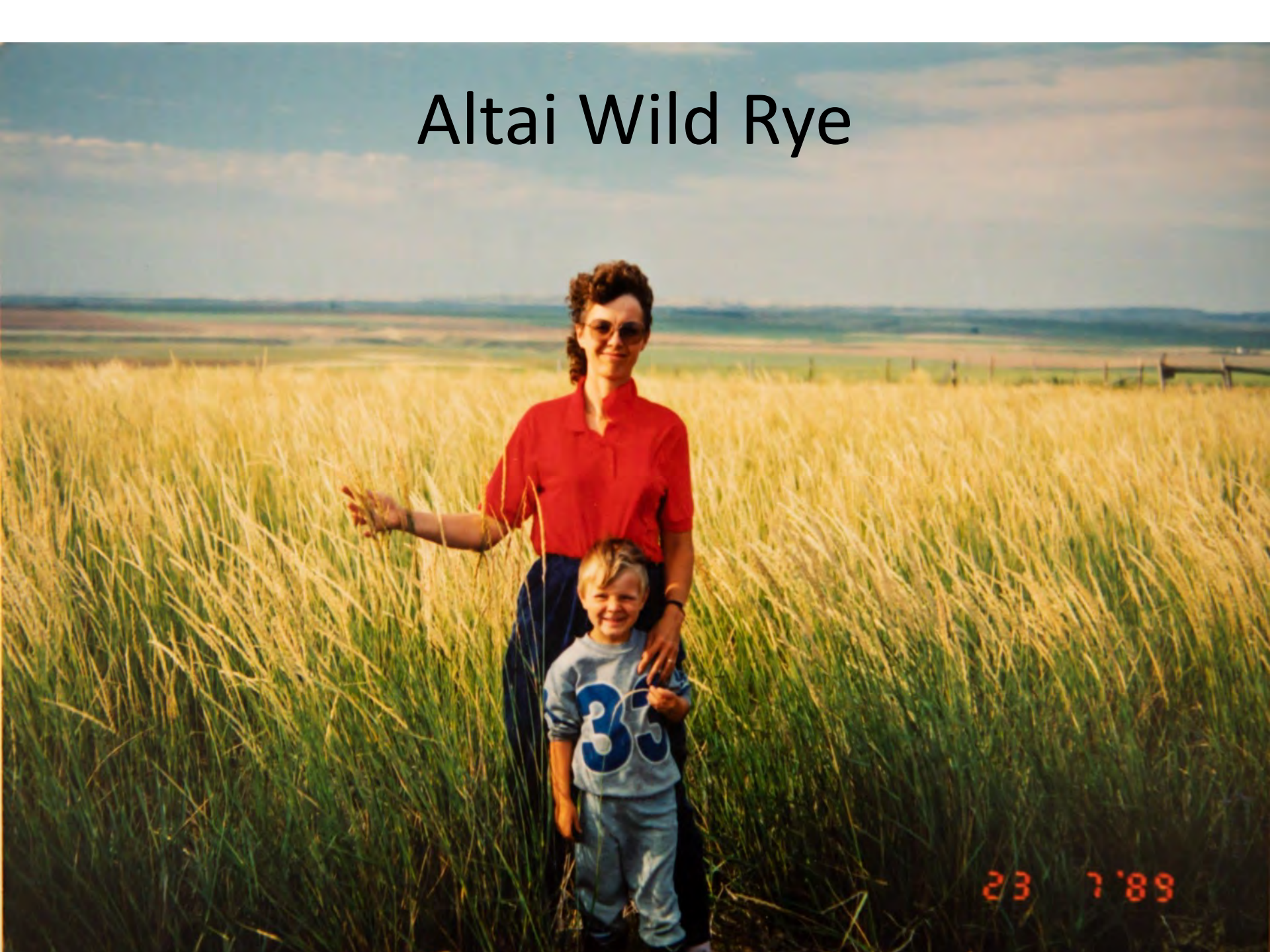




1650 lbs/acre vs 75 lbs/acre



Altai Wild Rye



23 7'89

Salt Block Donut ring









Burnt - Unburnt

Looking down
on the 2 sides



Fence corner



325'



150'



40'



Seed soil contact



Stock density observations

670 head – over 300,000 lbs/acre

About 1 – ½ acre areas for 45 minutes to 1.5 hours





July 7, 2019







35 yearling days per acre



**Cover Crop
Grazed one week apart
1 week ago – 2 weeks ago**



**Cover Crop
Not grazed – Grazed
75 yearling days per acre**





If 2.9 ton/acre yield then
75 yearling days/acre
at 30#/day = 40 % removal



Sept 30, 2019



5 Cow/calf days / acre in October



Sherri Grant

Photo taken October 14, 2019

Union forage Relay/Ultimate mix at 3.2 lbs/acre

Plus 1 lb Sorghum Sudan grass; 2 lbs Crown Millet and Barley, oats & forage peas on May 3, 2019

Green feed cut July 23,
2.9 ton/acre







Shanti Grant



Sherril Grant















Intercropping 2019

Seeded May 6 – Brown Mustard 5.5 lbs/acre (full rate)
Sweet Clover 2 lbs/acre
Leroy Forage Peas 60 lbs/acre (1/2 to 1/3 rate)
11-52-0 30 lbs/acre
39-0-0-6 130 lbs/acre
Mustard yield: ~ 13.5 bu/acre
Forage Peas yield: ~ 7.5 bu/acre
One field - Straight cut 9-10% moisture mustard
One field - Swathed – dry mustard

Separating a challenge





SG Grant ©
SHERIE GRANT

Pink Bee Plants – all a buzz!



Z IMG_0540.mp4